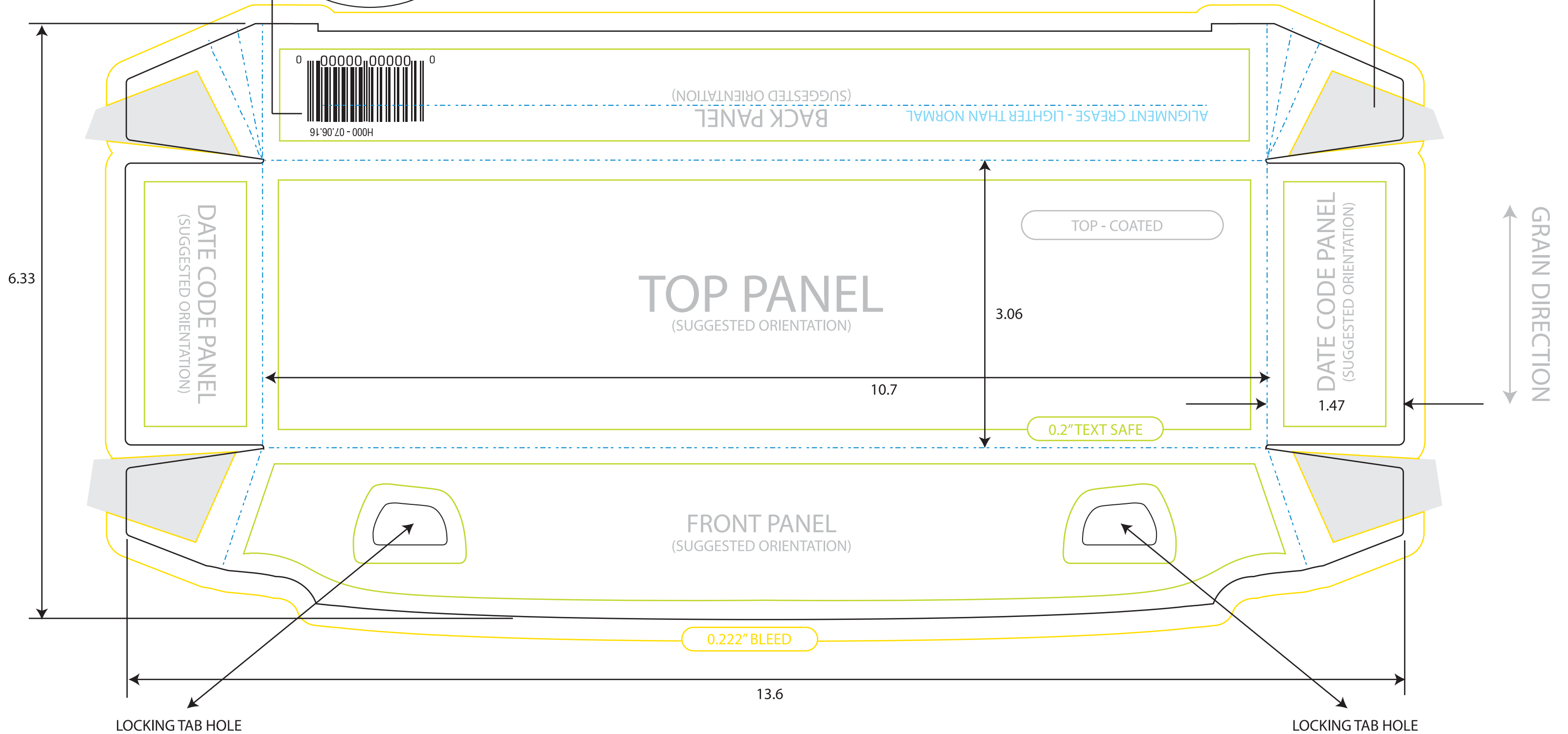


H000 - 07.06.16
(DESIGN CODE / CLICHÉ NUMBER - REV DATE)



HYBRID - OUTER LID

INK FREE / GLUE AREA



COATED

DATE: 07.06.16

<p>HARTMANN HYBRID LID STYLE: LABEL (DOZEN) SIZES: Small, Med, Lg and XL FILE NAME: Hybrid-Lid-OFS.ai</p>	<p>PRESS: LITHO SUBSTRATE: 24pt SBS C1S LID: COATED SIDE OF STOCK GRAPHICS: VECTOR & BIT MAP LID COLOURS: PROCESS (CMYK)</p>	<p>LINKED IMAGES: 300 DPI (Min) STROKE: 0.5pt (Min) TYPE SIZE: 5pt POSITIVE OR 7pt REVERSE (Min) TYPE SAFETY: 3/16 FROM CUT LINES, 1/16 FROM CREASE LINES</p>	<p>PRINT AREA: 13.6 x 6.33 BLEEDS: YES (0.125) TRAPPING: AUTOTRAP OVERPRINTING: NOT REQUIRED</p>	<p>SCALE: 100% UNITS: INCHES LPI: 175 UPC SIZW: 80% (Min)</p>	<p>CLICHÉ NUMBER: (PRODUCTION CODE) ITEM CODES ARE SPECIFIED BY HARTMANN CORRESPONDING INLID NUMBERS ARE PRINTED ABOVE OR BESIDE UPC CODE - AT 6PT TYPE, IN BLACK OR WHITE UNLESS OTHERWISE SPECIFIED BY CUSTOMER.</p>	<p>LABEL NUMBER: 3H-700000 INLID NUMBER: H000 COLOURS: 4 NEW REVISÉ DATE: 00.00.0</p>
--	--	---	--	---	---	---

NOTE: ALL FONTS MUST BE SUPPLIED OR CONVERTED TO OUTLINES ON SUBMITTED ART. FILES SHOULD BE SUBMITTED IN ILLUSTRATOR CC 2014 FORMAT. PLEASE INCLUDE ALL LINKED IMAGES (DO NOT EMBED RASTER GRAPHICS)

- WE DO NOT ACCEPT LOCKED FILES -